

T&E COMMITTEE #1  
September 19, 2019

**MEMORANDUM**

September 16, 2019

TO: Transportation and Environment Committee

FROM: <sup>GO</sup> Glenn Orlin, Deputy Director

SUBJECT: Purple Line

PURPOSE: Receive a Purple Line implementation status briefing from the Maryland Transit Administration (MTA) and Purple Line Transit Partners (PLTP)

The Council has asked that the T&E Committee receive briefings from MTA and PLTP on the status of implementing the Purple Line at least every six months. This worksession will be the fifth such briefing.

MTA and PLTP have prepared a PowerPoint presentation to which they will refer during the briefing (attached). The briefing will be led by:

Charles Lattuca, Executive Director, Transit Development & Delivery, MTA  
Peter van der Waart, Chief Executive Officer, PLTP

*Purple  
Line*



Montgomery County Council  
Transportation and Environment Committee  
September 19, 2019

**Charles Lattuca**

Executive Director, Transit Development and Delivery

Maryland Department of Transportation/Maryland Transit Administration

**Peter van der Waart**

Chief Executive Officer

Purple Line Transit Partners, LLC

**PURPLE LINE**  
TRANSIT PARTNERS

**MOT**  
MARYLAND DEPARTMENT  
OF TRANSPORTATION  
MARYLAND TRANSIT  
ADMINISTRATION

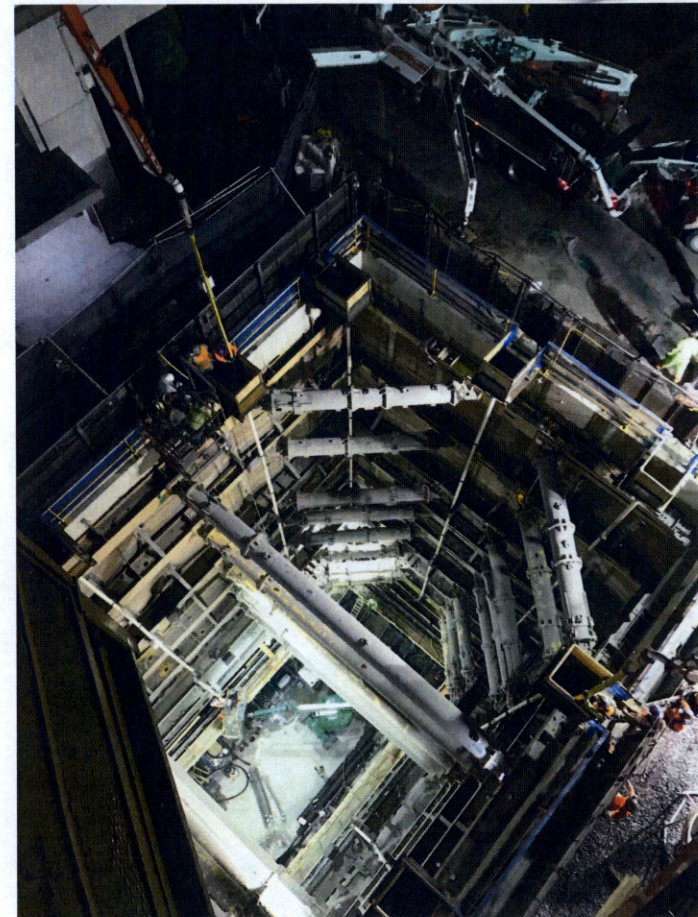


- Design: 96% complete
- Construction: 17% complete

Major Acceleration in 2019	Jan. 2019	Current
Miles under construction	5	12
Vehicle modules assembled (5 per train)	4	22
Craft men and women working	450	750



January 2019: 40 ft deep



September 2019: 90 ft deep



February 2019

September 2019





# Silver Spring Transit Center



Pre-construction

September 2019





# Silver Spring International Middle School



January 2019

September 2019





January 2019

September 2019







January 2019

September 2019





[September 2019 assembly video](#)



January 2019: 5 modules assembled in Elmira, NY



September 2019: 22 out of 130 modules shop assembled

June 2019: Began shop testing of 1<sup>st</sup> completed train



## 6-Month Construction Look Ahead



### **Corridor-wide**

- Retaining wall construction
- Storm drainage installation
- Utility relocations

### **Bethesda Station South Entrance (Elm Street):**

- Completion of excavation of shaft and cavern anticipated by summer 2020
- Installation of permanent concrete structure will follow until fall 2021
- Elm Street scheduled to reopen in early 2022

### **Bethesda Station and Enclosed Trainway**

- Station fit-out begins in fall 2020 with planned completion in fall 2021
- Work inside enclosed trainway began in August, scheduled completion in fall 2020



## 6-Month Construction Look Ahead



### **Jones Mills Rd. to Rock Creek**

- Jones Mill Rd. excavation for staged bridge construction
- Jones Mill Rd. bridge construction
- Rock Creek bridge construction

### **Lyttonsville / Brookville Rd. to Talbot Ave.**

- Lyttonsville parking lot construction
- Lyttonsville Station construction

### **Talbot Ave. at Rosemary Hills ES, CSX Corridor**

- Completed dismantling of old Talbot Bridge
- Completed first Talbot Bridge foundation abutment
- CSX Spur track construction



## 6-Month Construction Look Ahead



### **Silver Spring Transit Center / Downtown**

- Falkland Apartments partial demolition continues, completion in late 2019
- SSTC Purple Line bridge substructure work, girder erection
- Capital Crescent Trail bridge truss erection across Colesville Rd.

### **Silver Spring – Wayne Ave.**

- Complete Silver Spring International Middle School parking lot reconstruction in fall 2020

### **Plymouth Tunnel**

- Completion of tunnel lining anticipated in November 2019.
- Installation of tunnel structure to begin in December 2019 with anticipated completion in summer 2020
- Arliss Street planned to re-open by end of 2020

### **Manchester Place Station (Wayne Ave./Plymouth St.)**

- Installation of permanent structure ongoing since April 2019
- Parking lot for Kenwood House residents planned to re-open in spring 2020
- Station anticipated to be complete in spring 2021



# Public Outreach



## 5<sup>th</sup> Round of Community Advisory Teams Meetings

- Oct. 10: Silver Spring
- Oct. 22: Long Branch
- Oct. 28: Bethesda
- Nov. 12: Greater Lyttonsville/Woodside

## Construction Updates

- More than 4,000 County recipients

## New Construction-Focused Website

- [www.PurpleLineMD.com](http://www.PurpleLineMD.com) debuted last summer

## Social Media

- Active on Instagram, Facebook, Twitter
- +37% growth in followers since January



## Media Relations

- Highlight progress, facilitate accurate reporting





One-on-one meetings with impacted businesses, such as those on Bonifant St., to:

- Understand access/delivery requirements, other special needs
- Collaborate in identifying solutions
- Sponsor business association events, such as the Long Branch Festival
- Sponsored redesign of the *Discover Bonifant* website
- Coordinate with businesses to design/install **“open for business during construction”** signs
- Outreach conducted in English and Spanish





## Expanding Economic Opportunity



### Design DBE Goal: 26% (\$27.3m)

- \$41.4m DBE participation to date
- 8 Montgomery County DBE firms participating

### Construction DBE Goal: 22% (\$365.3m)

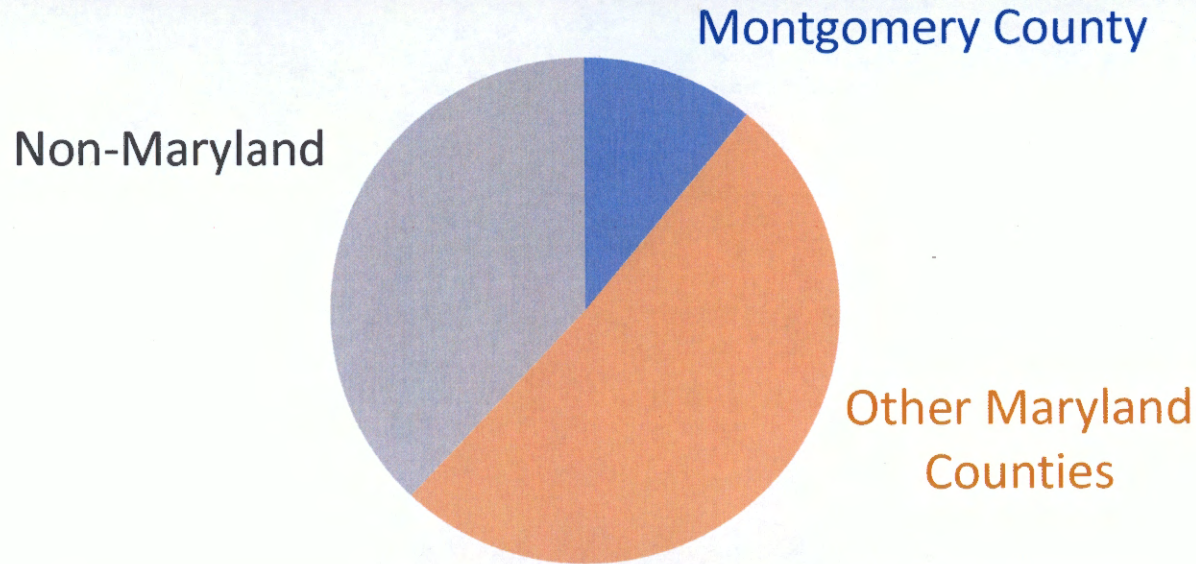
- \$37.5m DBE paid to date
- Over \$160m in DBE contract awards
- 13 Montgomery County DBE firms participating







# Montgomery County Purple Line Jobs



Project-wide Craft Employment by Jurisdiction		
Montgomery County	224	11%
Other Maryland Counties	984	51%
Non-Maryland	740	38%



## Stay Current



- **Sign up for construction notices at [purplelinemd.com](http://purplelinemd.com)**
- For construction-related questions and concerns, contact PLTC
  - Email: [outreach@pltcllc.com](mailto:outreach@pltcllc.com)
  - 24/7 hotline at 240-424-5325
- For general project questions and comments, contact MTA public outreach
  - Email: [outreach@purplelinemd.com](mailto:outreach@purplelinemd.com)
  - Call: 443-451-3706 or 443-451-3705 (Para Español)



/MarylandPurpleLine



@PurpleLineMD

