

**MEMORANDUM**

October 2, 2019

TO: Health and Human Services Committee  
Education Committee

FROM: Vivian Yao, Legislative Analyst *vy*

SUBJECT: Early Care and Education Initiative

PURPOSE: Receive an update on the Early Care and Education Initiative

**Expected Participants:**

- BB Otero, Special Assistant, Office of County Executive
- Raymond Crowel, Director, Department of Health and Human Services (DHHS)
- Maria Navarro, Chief Academic Officer, Montgomery County Public Schools (MCPS)
- Deann Collins, Executive Director, Office of the Deputy Superintendent, MCPS

**BACKGROUND**

On March 7, 2019, the Council President and County Executive, in partnership with Montgomery County Public Schools and Montgomery College, jointly announced the Montgomery County Early Care and Education Initiative (ECEI), a four-year action plan to significantly expand quality early care and education (ECE) options for infants, toddlers and preschoolers, provide greater access to more families, and support schools and community-based providers.

The approved FY20 Operating Budget included \$7 million to support the initiative by providing resources for the expansion, access, and sustainability of quality early care and education programs. Approximately, \$1 million of the total was appropriated to MCPS for additional full-day prekindergarten seats at a new Upcounty Early Childhood Center and \$6 million was appropriated to the Early Care and Education Non-Departmental Account<sup>1</sup>. County investment is to be guided primarily by the recommendations of a four-year action plan

---

<sup>1</sup> As a condition of the appropriation, the Council required quarterly reporting on expenditures/encumbrances from the NDA and notice of at least ten (10) days before executing or encumbering and expenditure of \$500,000 or more. The Council also mandated that funds appropriated in the NDA be placed in a General Fund account in which any unspent funds will be re-appropriated every year.

developed by a cross agency working group with representatives from County Government, Montgomery County Public Schools, and Montgomery College.

The ECEI presentation to the Joint Committee is attached at ©1-14, and the MCPS Early Learning Initiatives Update is attached at ©15-20.

**UPDATE**

The following tables summarize the work reported by the Executive for the ECE Initiative’s year one outcomes:

<b>Outcome 1: Expanding availability of ECE seats by approximately 600</b>	
Creating 400 new seats by recruiting, training and licensing 50 new Family Child Care (FCC) providers.	<ul style="list-style-type: none"> <li>MC Child Care Resource and Referral Center (R&amp;R) has supported the registration of 27 new FCC homes (198 seats) in two cohorts with an additional 16 FCC homes in process.</li> <li>Two additional cohorts are planned by March 2020 with a target of working with 34 additional FCC homes. <b>The R&amp;R has reduced the average time to register a home by five months.</b></li> <li>Montgomery College has worked with 9 participants who opened or are in the process of opening new FCC homes and 7 participants who have expanded to large FCC homes.</li> </ul>
Create 190 new seats in center-based/school settings in partnership with Montgomery College, MCPS and community-based providers.	<ul style="list-style-type: none"> <li>Added 80 full-day Pre-K seats at the new Up-County ECE Center.</li> <li>Added 80 full-day Pre-K seats at 4 schools (South Lake, Gaithersburg, Leleck, and New Hampshire Estates).</li> <li>Added a full-day inclusion class for 20 children at MacDonald Knolls Early Childhood Center.</li> <li>Added 44 full-day Pre-K seats with community-based providers with State Pre-K Expansion Grant funding.</li> <li>Adding services for up to 150 children and caregivers at new Family Involvement Center.</li> <li>Exploring supports needed to fill available Child Care in Public Space seats.</li> </ul> <p><b>Question: What is MCPS’s capacity to expand the number of full-day Pre-K seats in the future?</b></p>
Provide start-up funds/resources to support outfitting new homes and classrooms.	<ul style="list-style-type: none"> <li>Purchased materials and equipment to support FCC homes through existing R&amp;R budget.</li> </ul>
<b>Outcome 2: Increase access to quality ECE through increased utilization of WPA</b>	
<ul style="list-style-type: none"> <li>Identifying the reasons providers opt not to accept subsidies for payment.</li> <li>Exploring how to best use WPA by analyzing the impact of increasing income eligibility</li> </ul>	

thresholds, increasing reimbursement payments per child to providers, and whether to use WPA as supplement to the State program or to fully pay for seats with ECE providers.	
Continue to supplement State Child Care Scholarship awards.	<ul style="list-style-type: none"> <li>• Ongoing using existing DHHS Child Care Subsidies Program funding.</li> </ul>
Recruit new and existing providers to accept WPA.	<i>The Joint Committee may want to ask about progress with this item.</i>
Conduct provider orientations and training of staff to support families in completed subsidy program applications.	<i>The Joint Committee may want to ask about progress with this item.</i>
Conduct a public outreach campaign to bring more eligible families into subsidy programs and provide direct support identifying affordable, quality child care options.	<i>The Joint Committee may want to ask about progress with this item.</i>

<b>Outcome 3: Promote sustainability of existing family and center-based programs</b>	
<ul style="list-style-type: none"> <li>• Evaluating enrollment and coaching process at R&amp;R and Montgomery College.</li> <li>• Analyzing causes of attrition and identifying barriers and support needed.</li> <li>• Identifying the reasons providers opt not to accept subsidies for payment.</li> </ul>	
Provide business and finance training and coaching supports for small businesses through a collaboration between Montgomery College and the R&R.	<ul style="list-style-type: none"> <li>• R&amp;R provides business counseling with Maryland Women's Business Center with existing R&amp;R budget.</li> <li>• Supporting FCC providers with developing marketing plans.</li> <li>• Considering increasing resources to enhance business development and provider certification.</li> </ul>
Conduct a fiscal analysis of the conversion of WPA reimbursement rates to represent the actual cost of quality care.	<ul style="list-style-type: none"> <li>• Analyzed cost to cover the true cost of care versus the current market rate measure used by MSDE for subcommittee consideration.</li> </ul>

<b>Outcome 4: Establish a cross-agency work group to identify and resolve barriers to expansion, access and sustainable quality ECE</b>	
<ul style="list-style-type: none"> <li>• Identified Interagency Work Group (©4) and Stakeholder Work Teams (©5).</li> <li>• Creation of subcommittee to develop recommendations related to 5 areas: Access and Affordability, Facilities, Financing, Public Education and Community-based ECE Partnerships, and Workforce and Training.</li> <li>• Community forum scheduled for November 25.</li> </ul>	

**Outcome 5: Monitor Kirwan Commission recommendations to ensure alignment and possible coordination with partners at the State level**

- Participation on the Kirwan Funding Collaborative with representation from Council staff, Office of Legislative Oversight, Office of Management and Budget, Intergovernmental Relations, and MCPS.
- Meetings with MSDE regarding data sharing.
- Pritzker/National Governor’s Association Prenatal-3 Project.
- Preschool Development Grant Birth through 5 projects.

***Budget***

The Executive reports that to date, \$1.39 million of the \$7 million funding for the initiative has been allocated with \$1.09 million supporting the MCPS Up-County ECE Center and \$300,000 for the co-located Family Involvement Center. Apart from these efforts, work being performed by stakeholders in support of the initiative are not supported with funding appropriated for the initiative. All of the work being done by R&R staff is being supported by the program’s FY20 budget. For the Initiative’s budget, subcommittees are to develop recommendations to be reviewed by the ECEI Steering Committee and approved by the ECEI Executive Committee.

**The Joint Committee may want to understand when the ECEI NDA FY20 funds will be budgeted and encourage Executive staff to move forward more aggressively to use the allocated initiative funding, particularly in areas that would not be controversial for stakeholder groups and would further access to high quality ECE. For example, given the reductions and limitations to State funding for higher education scholarships, funding through the ECEI NDA could allow providers to access these important educational opportunities without delay and support building a quality ECE workforce. Grant or loan funding to help providers start-up or expand their businesses is another area that initiative funds could target sooner.**

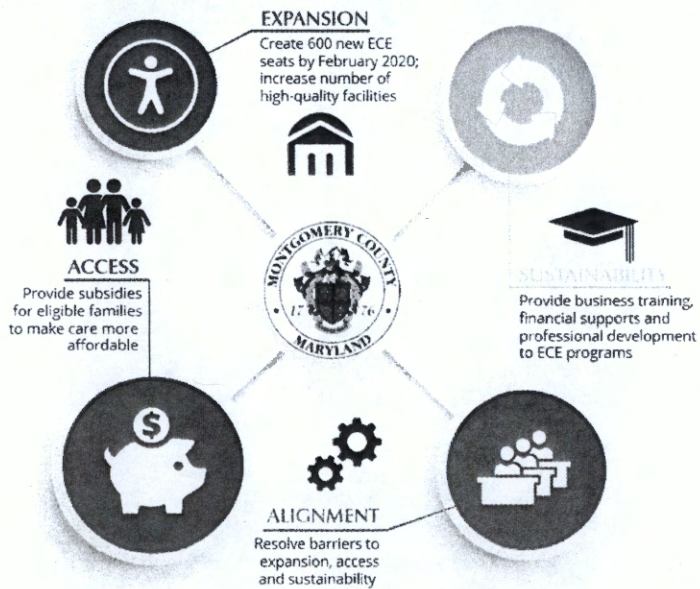
The packet contains the following attachments:

	<u>Circle #</u>
Montgomery County ECEI Presentation	1-14
MCPS Early Learning Initiatives Update	15-20
MCPS Summary of Prekindergarten and Head Start Slots	21-23
MCPS Prekindergarten Expansion Timeline	24-25



EARLY CARE & EDUCATION INITIATIVE

A four-year action plan to increase the number of child care seats for infants to 5 year olds living in the highest need areas of the County.



MONTGOMERY COUNTY EARLY CARE AND EDUCATION INITIATIVE

Update to the Education and Culture & Health and Human Services Committees

October 7, 2019



# EARLY CHILDHOOD DEVELOPMENT



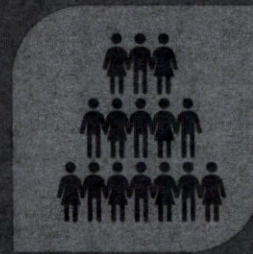
THE FIRST FIVE YEARS OF LIFE ARE CRITICAL AND  
BUILD THE FOUNDATION FOR LIFE LONG SUCCESS



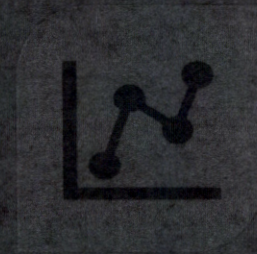
BUILDING THE  
FOUNDATION



RETURN ON INVESTMENT IS  
HIGH, FOR CHILDHOOD  
SUCCESS AND BEYOND



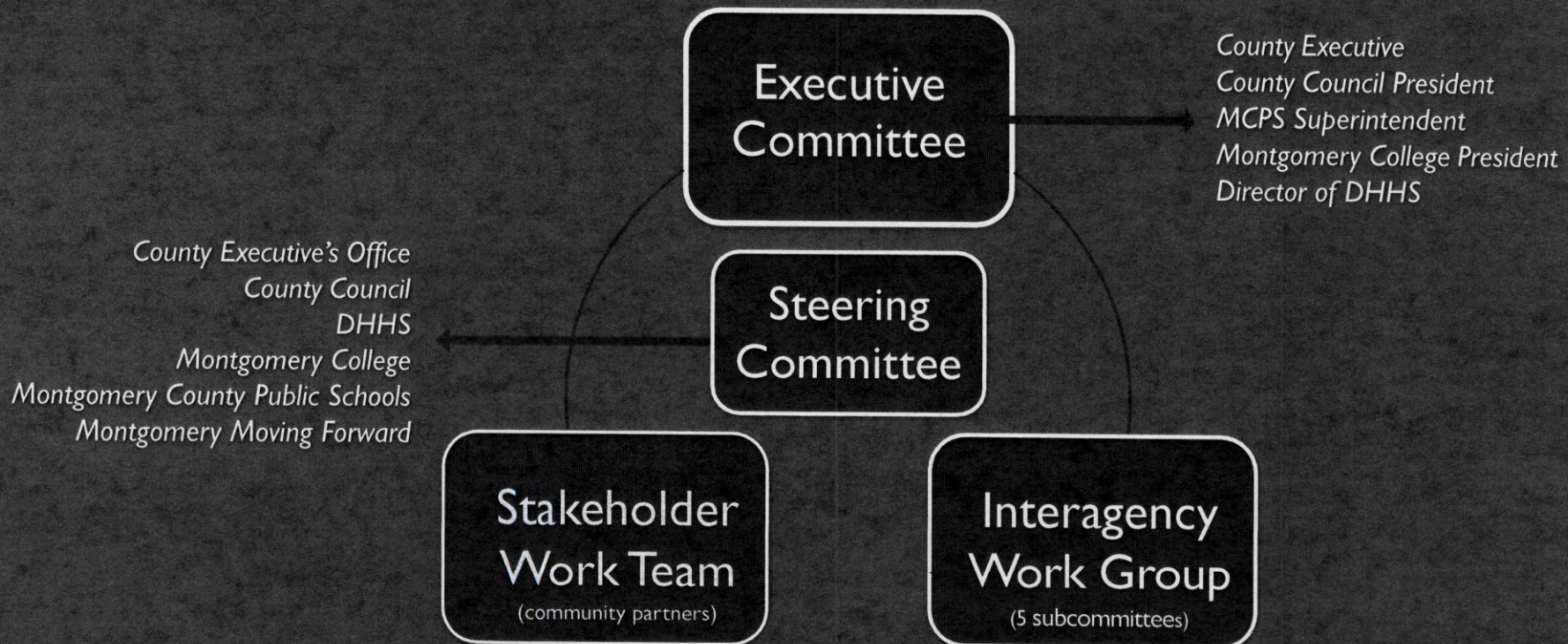
MULTI-GENERATIONAL  
IMPACT



ECONOMIC IMPERATIVE FOR  
THE COUNTY AS A WHOLE



# ECE INITIATIVE STRUCTURE





# INTERAGENCY WORK GROUP

Community Use of Public Facilities

Department of General Services

Department of Health and Human Services

Department of Permitting Services

Department of Recreation

Housing Opportunities Commission

Maryland-National Capital Park and Planning Commission

Montgomery College

Montgomery County Office of the County Executive

Montgomery county Office of Management and Budget

Montgomery County Public Libraries

Montgomery County Public Schools

Montgomery County Revenue Authority



# STAKEHOLDER WORK TEAM

- Associations of Child Care Providers
  - Family Child Care Association of Montgomery County
  - Jewish Federation of Greater Washington – Early Childhood Education Council
  - Latino Child Care Association of Maryland
  - Organization of Child Care Directors
  - Maryland Association for the Education of Young Children – County representative
  - Maryland State Child Care Association – County chapter
  - Montessori Schools of Maryland
- Boards, Committees, and Commissions
  - Commission on Child Care
  - Community Action Board
  - Early Childhood Coordinating Council
- Business Community - Dusty Rood, Rodgers Consulting
- Children's Opportunity Fund
- Collaboration Council of Montgomery County
- Economic Development Corporation
- Faith-based organizations
  - Interfaith Works
  - County Executive Office of Community Liaison Partnerships - Interfaith Community
- Families
  - Early Head Start
  - East County Opportunity Zone
  - Friends of the Library
  - Head Start Policy Council Representative
  - Local Interagency Coordinating Committee
  - Thriving Germantown
- Montgomery Moving Forward
- Nonprofit Organizations
- SEIU - Local 500



## ECEI SUBCOMMITTEES

**Overall Charge:** identify barriers and develop administrative and policy recommendations.

- **Access and Affordability**
- **Facilities**
- **Financing**
- **Public Education and Community-based ECE Partnerships**
- **Workforce and Training**



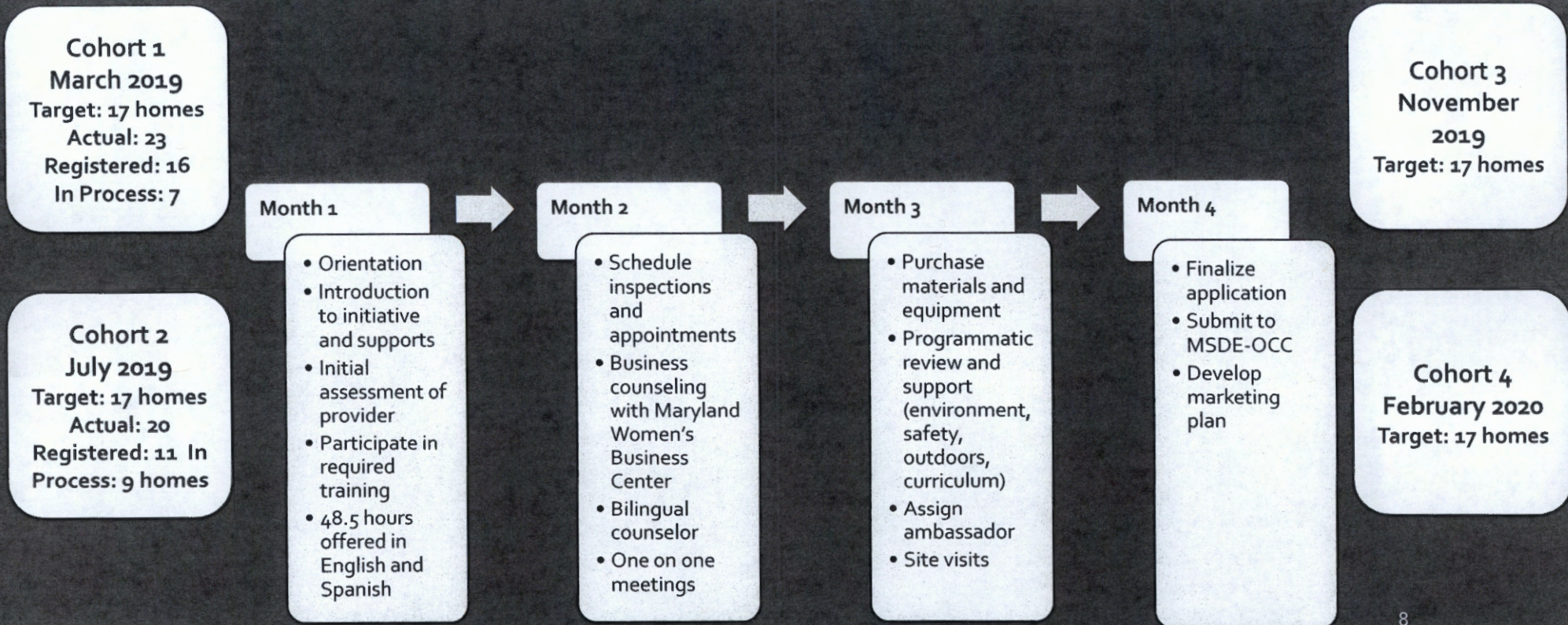
## YEAR-TO-DATE STATUS

**Outcome 1:** Expand the availability of ECE new seats for infants, toddlers, and preschoolers by 600.

- Registered 27 homes totaling 198 seats
- Enrolled 80 4-year-olds in the Early Childhood Center (MCPS)
- Designed Up County Family Involvement Center
- Reduce pre-registration process for FCC homes by 5 months



# DHHS/ ECS RESOURCE & REFERRAL CENTER







In Academic Year 2019

- 9 participants opened or are in the process of opening family childcare homes.
- 7 participants expanded to large family child care.
- 6 participants received promotions to administrator positions or higher.
- 5 participants applied for the Food Program which provides reimbursements for meals (additional income to provider).
- 1 participant developed a family child care App to track child care as a business.
- 7 of this year's participants are men and minorities, both traditionally underrepresented populations in ECE
- 6 participants applied for and awarded the Maryland Child Care Career and Professional Development Fund scholarship. The students will begin taking credit classes in Fall 2019 with full funding for tuition and books to earn an early childhood degree.



## YEAR-TO-DATE STATUS, CONT.

- **Outcome 2:** Increase access to quality ECE to more children through increased utilization of Working Parents Assistance Program (WPA).

The committees are reviewing WPA data and will make recommendations on:

- Increasing income eligibility thresholds
- Cost reimbursement payments per child to providers
- Use of WPA as a supplement vs use as the full payment to providers



## YEAR-TO-DATE STATUS, CONT.

**Outcome 3:** Ensure sustainability of existing family and center-based programs to reduce provider attrition and loss of available seats.

- Evaluating enrollment and coaching process at Resource and Referral Center and Montgomery College
- Analyzing causes of attrition, identifying barriers and supports needed
- Identifying the reasons providers opt not to accept subsidies for payment
- Analysis of cost to cover the "true cost" of care versus the current market rate used by MSDE



## YEAR-TO-DATE STATUS, CONT.

**Outcome 4:** Establish a cross agency working group to immediately identify and resolve barriers to expansion, access and sustainability of quality child care in the County, including but not limited to financing, services alignment, workforce supports, community engagement.

- Subcommittees in process of developing recommendations
- Guided by
  - The DHHS Early Care and Education Strategic Plan
  - Montgomery Moving Forward Call To Action
  - ECE Policy and Quality Enhancement Bill 13-15
  - Early Childhood Coordinating Council priorities
  - Commission on Child Care priorities
- Integration of Stakeholder representatives
- Community forum scheduled for November 25



## YEAR-TO-DATE STATUS, CONT.

**Outcome 5:** Monitor Kirwan Commission recommendations to ensure alignment and possible coordination with partners at the State level.

- Local Kirwan Funding Collaborative
- Meetings with MSDE regarding data sharing
- Participant in Pritzker Birth to Three Planning Grant
- Preschool Development Grant Birth through 5 projects



# BUDGET ALLOCATIONS

- \$7 million allocation
  - Montgomery County Public Schools Up-County ECE Center (\$1.09M)
  - Family Involvement Center (\$300,000)
- Subcommittees are to develop initial recommendations to be reviewed by the Steering Committee and approved by the Executive Committee
- Issues for Consideration
  - Increase access for low income families to subsidies
  - Mapping existing supply of providers to key areas of need
  - Increase resources to enhance business development and provider certification.
  - Exploring loan/grant programs to support expansion
  - MCPS and DHHS partnerships to enhance the expansion of service for 3 and 4-year-olds continues
  - Exploring revenue streams to support expansion of ECE in Montgomery County
  - Review of HHS capacity

# Early Learning Initiatives Update

Montgomery County Council  
October 7, 2019

## Today's Discussion

---

- Dr. Maria Navarro, Chief Academic Officer, Montgomery County Public Schools
- Dr. Deann M. Collins, Executive Director, Office of the Deputy Superintendent

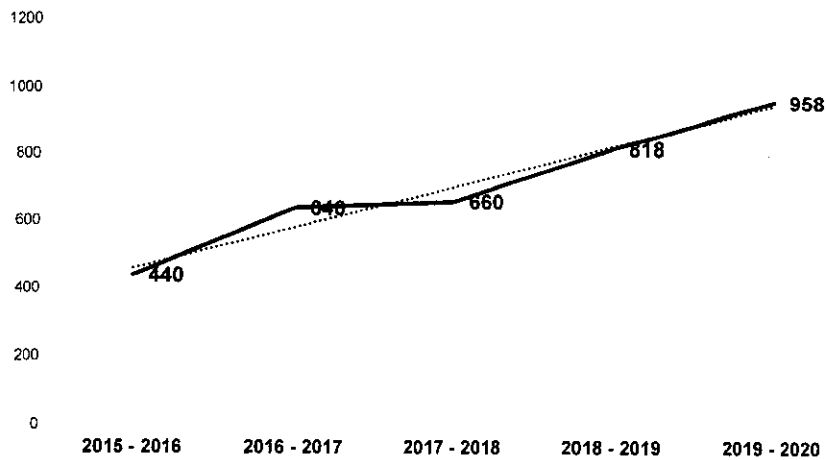
## Current enrollment data by Head Start and Pre-K Classroom

Age	Head Start		Pre-K		Total
	Full Day	Part Day	Full Day	Part Day	
3	0	65	0	0	65
4	527	46	527	1,562	2,662
<b>Total</b>	<b>638</b>		<b>2,089*</b>		<b>2,727*</b>

\*Enrollment numbers reflect totals for Pre-K as of September 20, 2019

## Full-Day Pre-K Expansion Trends

Number of Full-Day Slots in MCPS  
2015 - 2020



216



## Part-Day and Full-Day Head Start Programs

Program	Age	Schools	Capacity Per Class
Part-Day	3-Year-Old	<ul style="list-style-type: none"> <li>• Dr. Sally K. Ride</li> <li>• Beall</li> <li>• Maryvale</li> <li>• New Hampshire Estates</li> </ul>	15
Part-Day	3 & 4 Year-Old	<ul style="list-style-type: none"> <li>• College Gardens</li> <li>• East Silver Spring</li> </ul>	17
Full-Day	4-Year-Old	27 Schools (List Provided)	20
4 Hour	4-Year-Old	<ul style="list-style-type: none"> <li>• Strawberry Knoll</li> </ul>	14
<b>Total - 648</b>			

## Part-Day and Full-Day Pre-K Programs

Program	Age	Schools	Class Size	Total Children Enrolled/Capacity
Part-Day	4-Year-Old	40 Schools (List Provided)	20	1600/1765
Full-Day	4-Year-Old	32 (List Provided)	20	631/660
<b>Total</b>				2231/2425

17

## Update on the Summer Pre-K Program: July 1 – August 2, 2019

School	Full-Day Summer Program	Sessions	Capacity	Actual Enrollment
Bel Pre	Head Start	2	40	40
	Prekindergarten	1	20	19
Jackson Road	Head Start	1	20	20
Rolling Terrace	Head Start	2	40	33
Washington Grove	Head Start	3	60	60
	Prekindergarten	1	20	20
Watkins Mill	Prekindergarten	1	20	19
MacDonald Knolls	Prekindergarten	4	80	80
<b>TOTAL</b>		<b>15</b>	<b>300</b>	<b>291</b>

## Regional Early Childhood Centers

<b>MacDonald Knolls Early Childhood Center</b>	<b>Up-County Early Childhood Center at Emory Grove</b>
10611 Tenbrook Drive, Silver Spring, MD 20901	18100 Washington Grove Lane, Gaithersburg, MD 20877
Full-Day Inclusion Model	Full-Day Inclusion Model
<ul style="list-style-type: none"> <li>▪ 100 Four-Year-Olds</li> <li>▪ 18 Three-Year-Olds in Special Education</li> <li>▪ 118 Children Total</li> </ul>	<ul style="list-style-type: none"> <li>▪ 80 Four-Year-Olds Total</li> </ul>
In partnership and co-located with The Arc Montgomery County Karasik and Family, Infant & Child Care Center (KFICCC)	In partnership with DHHS-Early Childhood Services to co-locate a Family Involvement Center for children birth to five
Permanent Location	Temporary Location

18

## **Potential Expansion for Early Care and Education Programs in MCPS**

---

- Opportunities for expansion of full-day Pre-K in MCPS; and
- Exploring options for income-eligible three-year-olds.

# **Discussion**

# Thank You



## Part-Day and Full-Day Prekindergarten Slots

2019 – 2020

### Information for Slide #5

<b>Full-Day Head Start 4-Year-Olds</b>	<b>Number of Sessions</b>
Belis Mill	1
Brown Station	1
Clearspring	1
Clopper Mill	1
Dr. Charles R. Drew	1
Fairland	1
Georgian Forest	1
Glenallan	1
Harmony Hills	1
Highland	1
JoAnn Leleck ES at Broad Acres	1
Kemp Mill	1
Maryvale	1
S. Christa McAuliffe	1
Montgomery Knolls	1
New Hampshire Estates	4
South Lake	1
Summit Hall	1
Twinbrook	1
Viers Mill	1
Washington Grove	1
Watkins Mill	1
Weller Road	1
Wheaton Woods	1
<b>Total</b>	<b>27</b>

**Information for Slide #6**

<b>Part-Day Prekindergarten -- 4 Year-Olds</b>	<b>Number of Sessions</b>
Beall	1
Bel Pre	4
Brown Station	2
Burnt Mills	2
Rachel Carson	2
Clearspring	1
Clopper Mill	2
Capt. James E. Daly	2
Dr. Charles R. Drew	2
East Silver Spring	1
Flower Hill	2
Fox Chapel	2
Gaithersburg	2
Galway	2
Georgian Forest	2
Greencastle	1
Harmony Hills	2
Highland	2
Jackson Road	1
JoAnn Leleck ES at Broad Acres	4
Maryvale	2
Mill Creek Towne	1
Montgomery Knolls	3
New Hampshire Estates	2
Roscoe Nix	2
William Tyler Page	2
Judith Resnik	2
Dr. Sally K. Ride	2
Rock View	2
Rolling Terrace	2
Rosemary Hills	2
Rosemont	2
Sargent Shriver	2
South Lake	2
Stedwick	2
Summit Hall	2
Twinbook	2
Washington Grove	2
Weller Road	2
Wheaton Woods	2
<b>Total</b>	<b>78</b>

**Information for Slide #6 (cont.)**

<b>Full-Day Prekindergarten— 4-Year-Olds <i>Includes Prekindergarten Expansion Grant Classes*</i></b>	<b>Number of Sessions</b>
Arcola	1
Brooke Grove	1
Cashell	1
Fields Road	1
Forest Knolls	1
Gaithersburg	1
Glen Haven	1
Kemp Mill	1
MacDonald Knolls Early Childhood Center	5
Ronald McNair	1
New Hampshire Estates	1
Oakland Terrace	1
Rock Creek Forest	1
Up-County Early Childhood Center	4
Flora M. Singer	1
South Lake	1
Watkins Mill	1
Bel Pre *	1
Clopper Mill*	1
JoAnn Leleck at Broad Acres*	1
Rolling Terrace*	1/1*
Washington Grove*	1
Weller Road *	2
Summit Hall*	1
<b>Total</b>	<b>32</b>

# Montgomery County Public Schools Prekindergarten Expansion Timeline 2016 – 2020

## 2015 – 2016\*

- Prekindergarten Expansion Grant funding provides full-day Pre-K programming for income-eligible families at 200% – 300% of FPL in five classes serving 100 children.
- MCPS begins technical partnerships with eight community-based child care providers receiving Prekindergarten Expansion Grant Funds; community-based providers receive grant funds to expand full-day prekindergarten to income-eligible families at 200% - 300% FPL serving approximately 95 children.

## 2016 - 2017

- Montgomery County Council provides funding to expand **10** remaining part-day Head Start classes in non-Title I Schools to full-day.
- Prekindergarten Expansion Grant in public and private programs continue.

## 2017 - 2018

- Prekindergarten Expansion Grant in public and private programs continue.
- Additional Prekindergarten Expansion Grant funds are allocated to MCPS increasing the number of full-day slots from five to six classes serving **120** children

## 2018 - 2019

- Montgomery County Council provides additional funding to convert 11 part-day only Public Pre-K Classes in MCPS to full-day.
- MCPS utilizes additional funding to expand full-day Pre-K by renovating and opening the MacDonald Knolls Early Childhood Center in a building with a community-based partner; MacDonald Knolls ECC provides full-day Pre-K for **98** children in an inclusion model.
- A full-day Pre-K class of **20** children is added to Arcola Elementary School where there had not been a Pre-K class.
- Additional Prekindergarten Expansion Grant funds are received from MSDE to increase Pre-K Expansion Grant classes from six to eight serving **160** children

## 2019 - 2020

- Prekindergarten Expansion Grant will continue to fund 160 slots in MCPS and 242 slots in community-based partner programs. Two part-day sessions converted to full-day at 2 high-need down-county public school creating **40** full-day slots.
- MacDonald Knolls Early Childhood Center adds additional full-day inclusion class for **20** children by converting a part-day only session at a nearby elementary school to a full-day class; MacDonald Knolls Early Childhood Center will serve **118** children in FY20.
- Part-Day classes at Gaithersburg ES and South Lake ES converted to full-day.
- An Up-County Early Childhood Center at Emory Grove opens serving **80** children, following the inclusion model at MacDonald Knolls Early Childhood Center. In partnership with DHHS, the Up-County Early Childhood includes a Family Involvement Center serving children birth to five.

\*Title I Funds expanded full-day Head Start programming in 17 Title I Schools since 2007 for 340 students.

*Total New Full-Day Slots Added between 2015 and 2020 = 1,122*



**Accumulation of Full-Day Slots:**

<b>Total Number of Full-Day Slots Added</b>	
160	Pre-K Plus
200	Head Start funded by County Council
220	Part-Day to full day funded by County Council
100	MacDonald Knolls Early Childhood Center
20	Arcola
20	Gaithersburg
20	South Lake
20	New Hampshire Estates
20	JoAnn Leleck
80	Up-County Early Childhood Center at Emory Grove
820	Total in MCPS
242	Community-Based Technical Pre-K Expansion Grant Partners
1,122	Grand Total of Full-Day Slots Added

25